

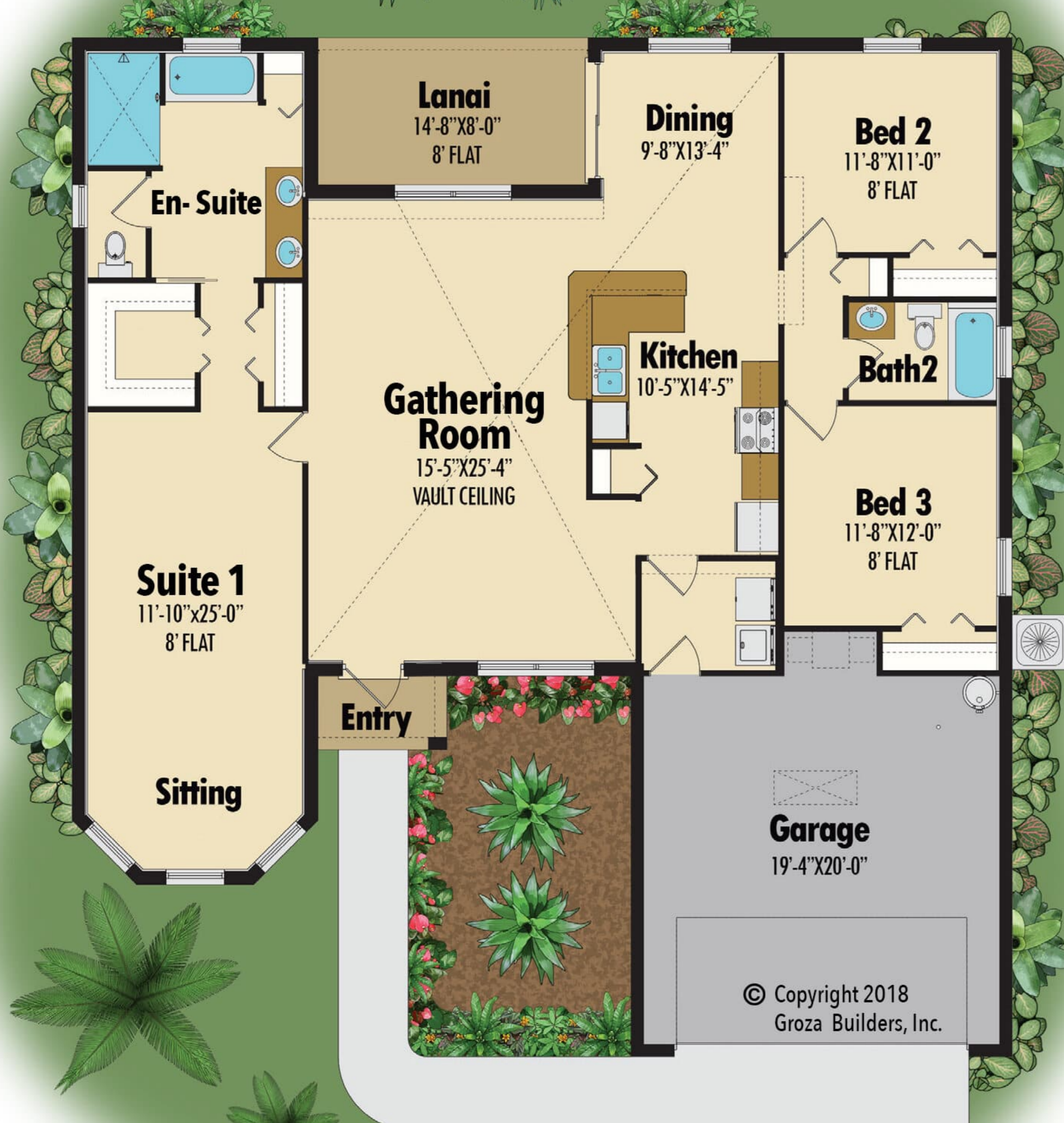


# Vermont

## Square Footage

Living	1,777
Garage	440
Lanai	117
Entry	28
<b>Total</b>	<b>2,362</b>

All dimensions and specifications are approximate and subject to change in the field. Rendering and floor plan are for illustrative purposes only and may not reflect the actual characteristics of the actual home. Please discuss options with your salesperson.



© Copyright 2018  
Groza Builders, Inc.



511 SW Port St. Lucie Blvd  
Port St. Lucie, FL 34953  
Lic# CGC 1524734  
**(772) 336-7653**  
[www.grozahomes.com](http://www.grozahomes.com)