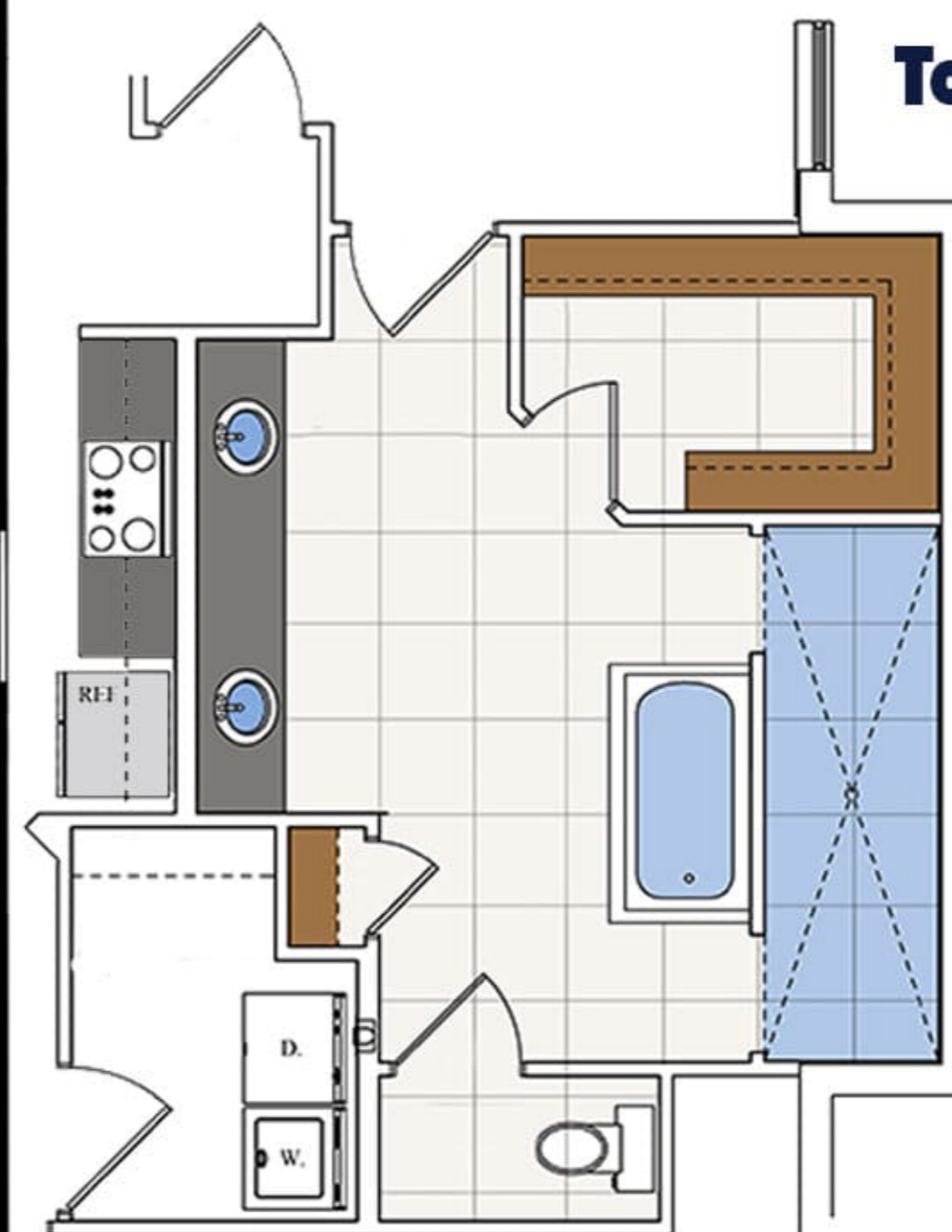




BRUNSWICK

Square Footage

Living	2,216
Garage	430
Lanai	218
Entry	57
Total	2,921



OPTIONAL ENSUITE BATH

© Copyright 2022
Groza Builders, Inc.

511 SW Port St. Lucie Blvd.
Port St. Lucie, FL 34953
LIC# CGC1524734
772-336-7653
www.grozahomes.com



All dimensions and specifications are approximate and subject to change in the field. Rendering and floor plan are for illustrative purposes only and may not reflect the actual characteristics of the home. Please discuss options with your sales person.