



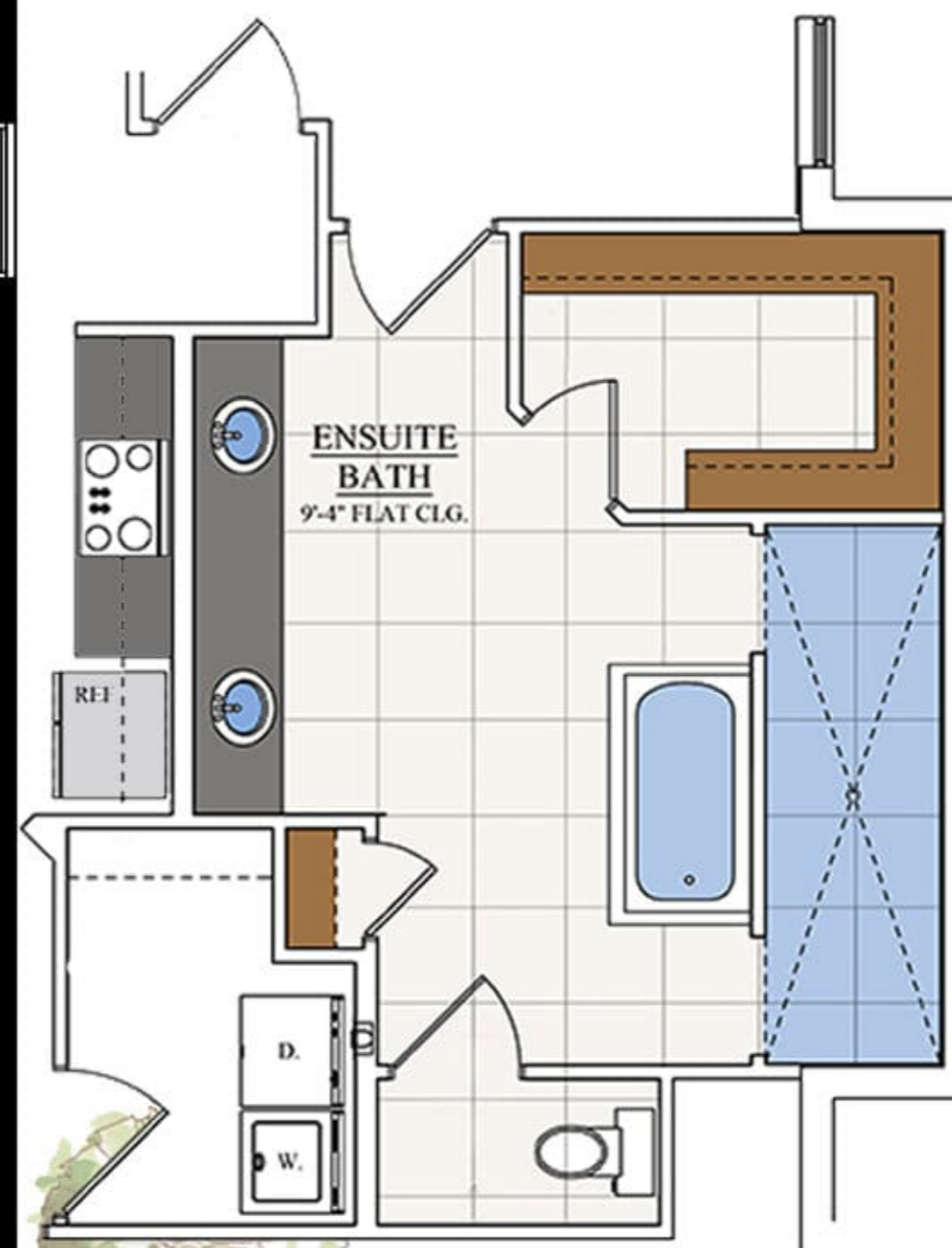
10'8" CEILING IN MAIN AREAS
9'4" CEILING IN BED/GARAGE



BRUNSWICK II

Square Footage

Living	2,016
Garage	429
Lanai	224
Entry	57
Total	2,771



OPTIONAL ENSUITE BATH

511 SW Port St. Lucie Blvd.
Port St. Lucie, FL 34953
LIC# CGC1524734
772-336-7653
www.grozahomes.com

All dimensions and specifications are approximate and subject to change in the field. Rendering and floor plan are for illustrative purposes only and may not reflect the actual characteristics of the home. Please discuss options with your sales person.

