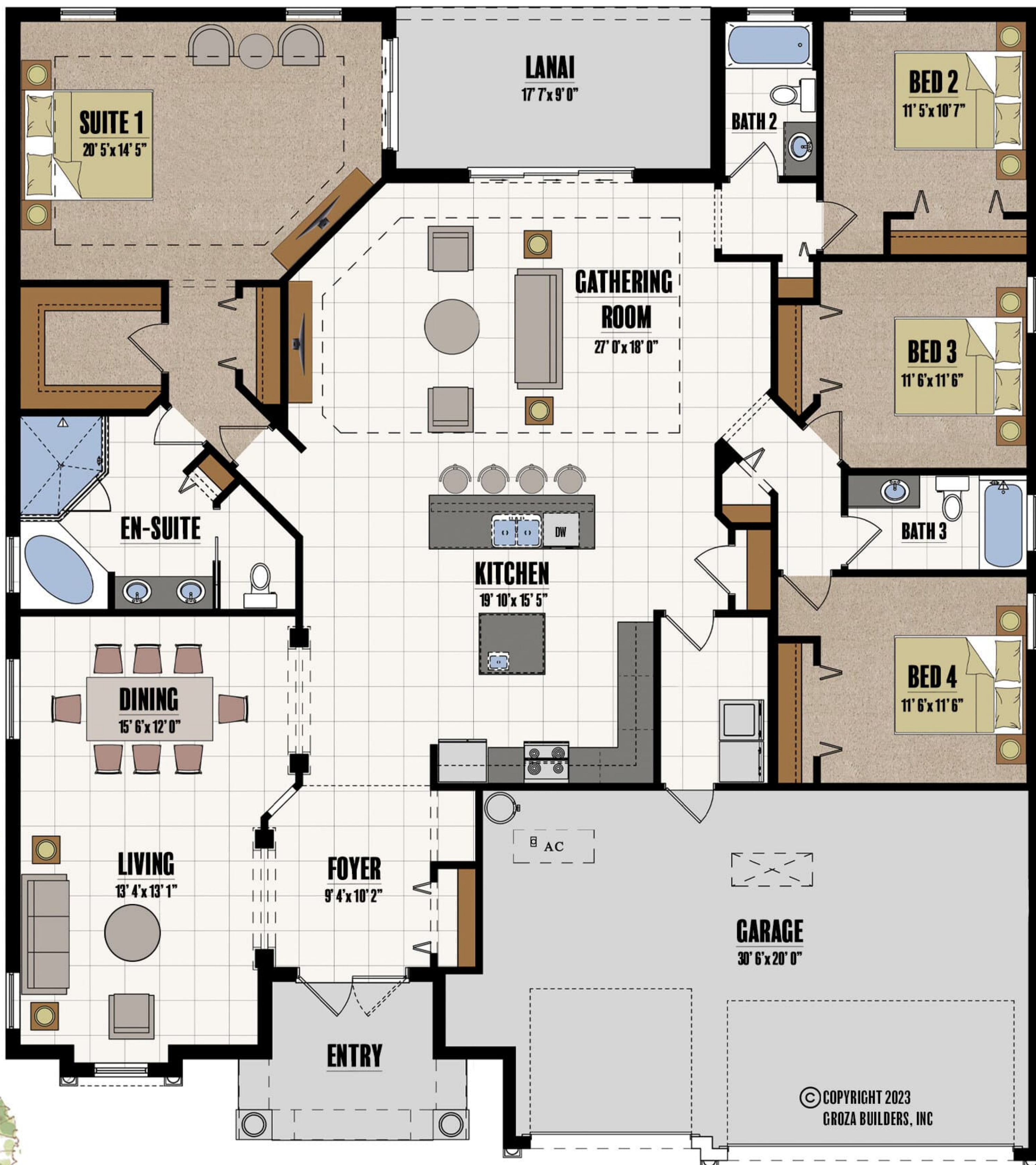




9'4 CEILINGS



CATALINA-R

Square Footage

Living	2,717
Garage	643
Lanai	158
Entry	97

Total 3,615

All dimensions and specifications are approximate and subject to change in the field. Rendering and floor plan are for illustrative purposes only and may not reflect the actual characteristics of the home. Please discuss options with your sales person.



511 SW Port St. Lucie Blvd.
 Port St. Lucie, FL 34953
 LIC# CGC1524734
 772-336-7653
www.grozahomes.com

© COPYRIGHT 2023
 GROZA BUILDERS, INC