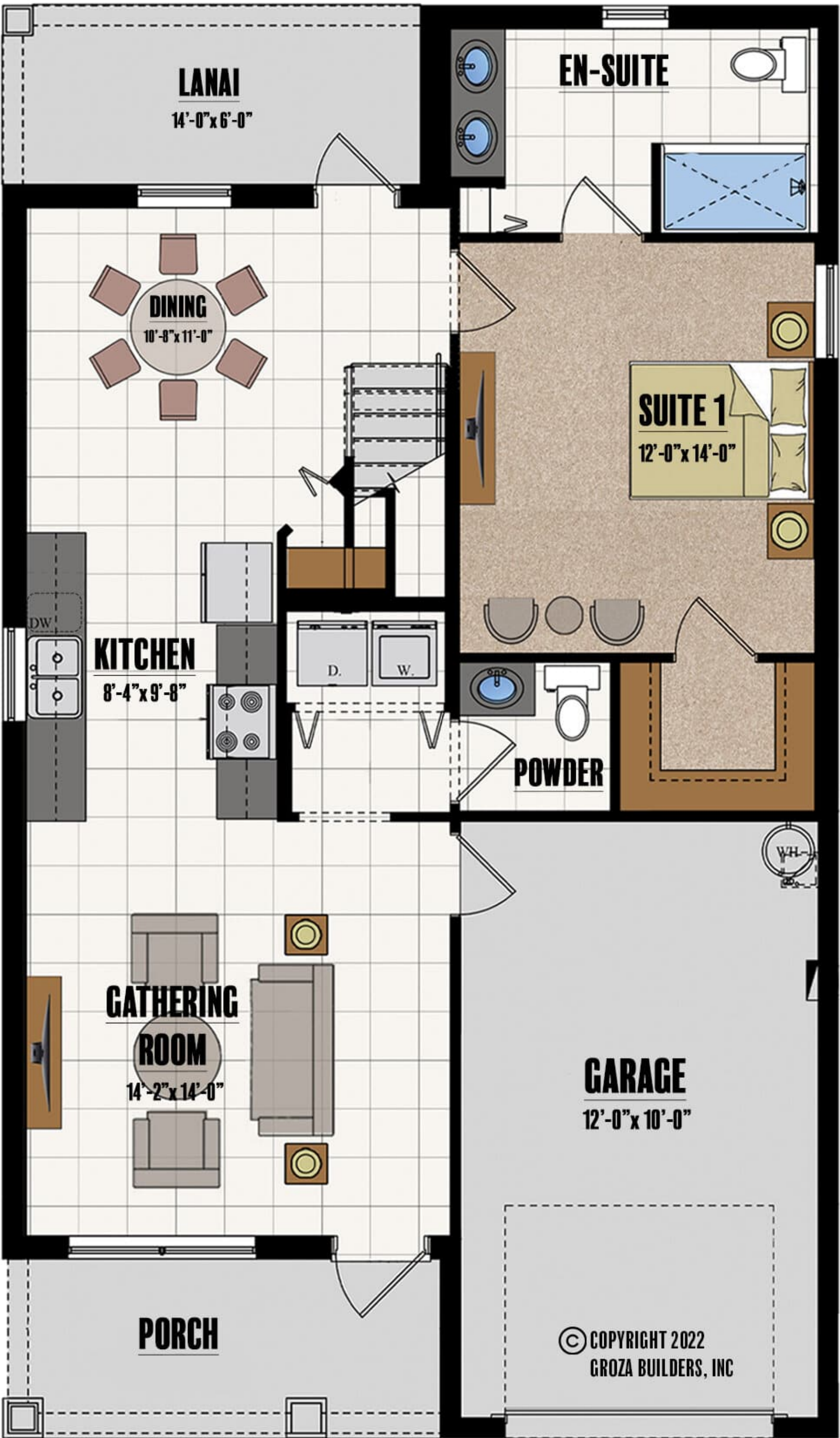




\*ILLUSTRATIVE PURPOSES ONLY\*

**FIRST FLOOR** 8'-8" FLAT CEILING.



**SECOND FLOOR** 8' FLAT CEILING.



# SUNFLOWER

## Square Footage

Living 1st Floor	906
Living 2	651
Garage	266
Lanai	84
Entry	88
<b>Total</b>	<b>1,995</b>

All dimensions and specifications are approximate and subject to change in the field. Rendering and floor plan are for illustrative purposes only and may not reflect the actual characteristics of the home. Please discuss options with your sales person.

511 SW Port St. Lucie Blvd.  
Port St. Lucie, FL 34953  
LIC# CGC1524734  
772-336-7653  
www.grozahomes.com

