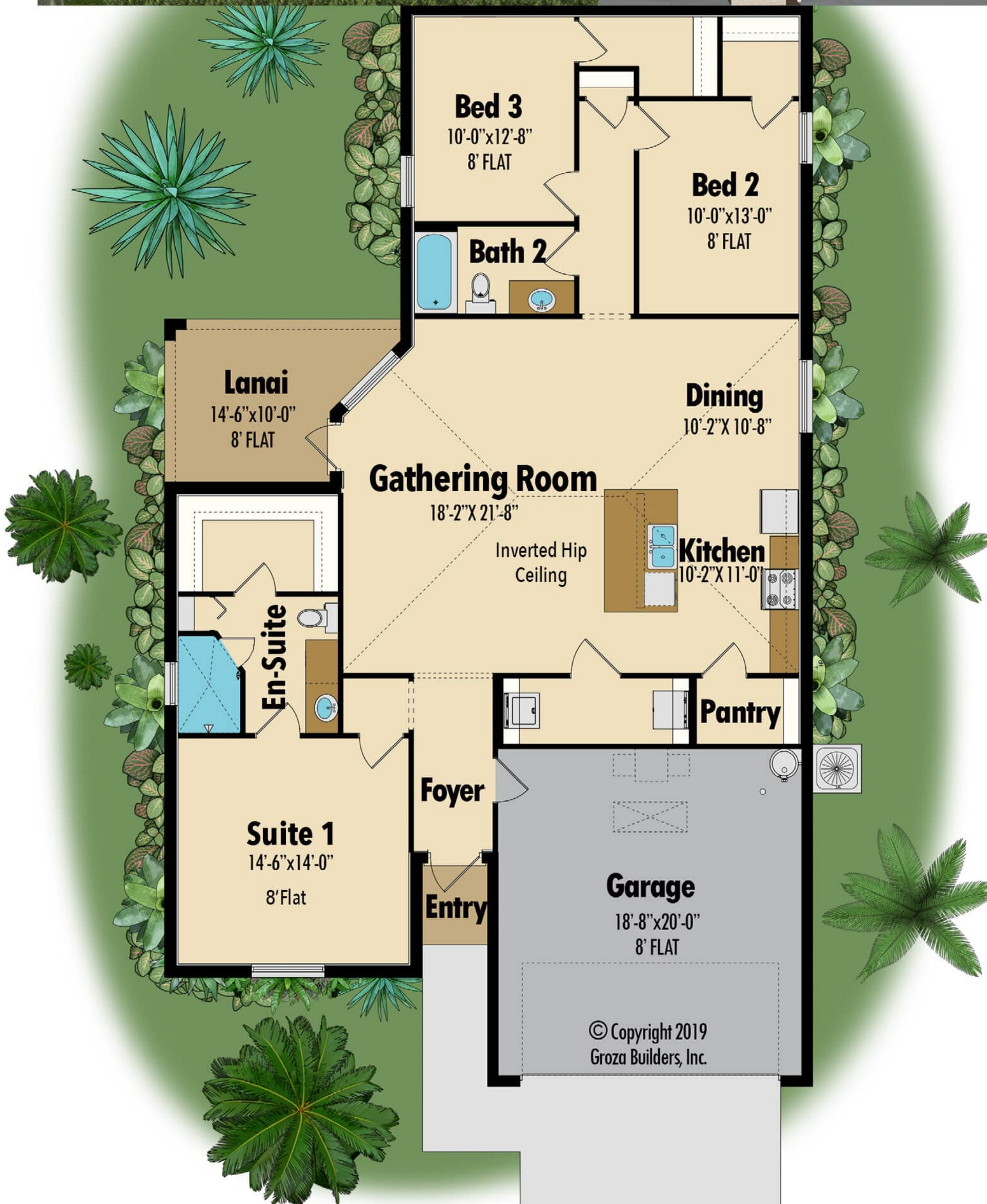




**A**



**B**



# Camelot

## Square Footage

Living	1,677
Garage	408
Lanai	117
Entry	20

**Total 2,222**

All dimensions and specifications are approximate and subject to change in the field. Rendering and floor plan are for illustrative purposes only and may not reflect the actual characteristics of the actual home. Please discuss options with your salesperson.



511 SW Port St. Lucie Blvd  
 Port St. Lucie, FL 34953  
 Lic# CGC 1524734  
 (772) 336-7653  
[www.grozahomes.com](http://www.grozahomes.com)

© Copyright 2019  
 Groza Builders, Inc.